

THE

OFFICIAL MATCHDAY MAGAZINE OF CHELTENHAM TOWN WOMEN FC | ISSUE 02

ROBINESSES REVIEW



CHELTENHAM TOWN WFC V AFC WIMBLEDON WOMEN
FA WOMEN'S NATIONAL LEAGUE SOUTHERN PREMIER
SUNDAY SEPTEMBER 1, 2024 | 2:00PM

£1.50



**MAKE
FOOTBALL
EVERYONE'S
GAME.**



**FINANCIAL
FITNESS GROUP**

Proud Partners of
Gloucestershire's Largest Women's Football Club



**CHEL TENHAM TOWN
WOMEN FC**

ANDY LIDDLE

• Cheltenham Town Women FC's Chairman shares his thoughts ahead of today's fixture



**Welcome along to match day Three.
How great it is to be writing this
having taken six points from six
during our opening two games with
goals aplenty and none conceded.**

We have tougher fixtures to come, but our start is the reward for recruiting and retaining the right talent, along with a well thought out (tough) pre-season. Many Tier Three sides are now paying players – and some handsomely – whilst we focus on player development and playing with team cohesion, which I am sure will develop as the season progresses.

I extend a warm welcome to AFC Wimbledon Women who, having finished runners-up in 2022/23, went on to win the FA WNL Division One South-East in 2023/24 by seven points and with an incredible +61 goal difference, two great back-to-back years.

This is the first time the two clubs have met in the league, and we warmly welcome all the players, staff, directors and supporters of the Wombles. Sadly, I am old enough to remember the original TV series being launched!

We are also delighted to welcome new Player Sponsors to the Cheltenham Town Women family this week. Chunky Chown's Childcare, Morgan and Carter Powell, Blades Bikes, and 270 Climbing.



If you would like more information on player sponsorships, email commercial@ctwomenfc.com

We have never won our opening three league games at this level before, so make some noise, get behind the team and let's create some history!

Thanks for your support!

**Andy Liddle,
Chairman**





- The Robinesses Manager looks ahead to today's game...

Good afternoon and a warm welcome to Kayte Lane as we face AFC Wimbledon in the FA WNL Southern Premier.

We've managed to back up a fantastic opening day display with a dominant performance against Milton Keynes Dons Women, which is pleasing owing to the number of players used while also continuing to build on a good start to the season.

As we develop connections between players, both towards their understanding of how we want to play with and without the ball as a team, and how they contribute and impact the game as individuals, it's exciting to see the level of performance in these early stages, knowing that if we can continue to work hard and support each other that these performances can continue to develop and improve.

Today provides our toughest challenge of the new season with newly promoted AFC Wimbledon, who come into the game on the back of a fantastic league winning campaign. This division is relentless and it's important that we build upon the start we've made as we challenge ourselves to keep improving year on year.

I'd like to welcome Kevin, and the players, staff, and supporters of AFC Wimbledon to Gloucestershire today and congratulate them on their success last season and welcome them to the Third Tier of women's football.

Lastly, as our Reserves Team also get underway today, I'd like to wish them well, while we can already celebrate successes of players contributing in both pre-season and within the opening games of the First Team season, again highlighting the pathway we're building and the connections between our sides.

Enjoy the game,

Tom

MATCH ACTION

Sunday 25 August 2024 | 14:00 | FA Women's National League Southern Premier



MILTON KEYNES DONS WFC 0 - 5 CHELTENHAM TOWN WFC



Draper, Anslow, Dalton, O Welham, Jacovides (Beverly 45), Chambers (Oshodi 45), Omenazu (Jackson 66), Cunnison (Appleton 35), Stewart (Rimington 45), M Welham, Byrom



Smith; Sharpe (Finch 85), Owen, Llewellyn; Trinci (Bell 71), Hateley, Collis, Attenborough (Pemberton 71), Liggett (Greenwood 78); Lue, Butcher (Pengelly 78).

Cheltenham Town Women continued their perfect start to the league with another dominant display, beating MK Dons Women 5-0 away from home.

Skipper Emily Owen put the Robinesses into the lead with a calm penalty finish, along with an Una Lue brace and another goal from Lacy-Jai Liggett, with Henna Butcher rounding off the scoring just before the 70th minute.

Cheltenham's chances opened up just three minutes in, with Butcher fizzing a ball across the face of goal before moments later a long-range effort was tipped onto the crossbar by Don's 'keeper Anna Draper, with Una Lue unable to follow up.

Lue would make up for this later on, forcing Draper into a mistake and winning a penalty, with Owen converting from the spot on the 20-minute

mark.

Two minutes later, Lue would have a goal for herself, rising highest in the box to nod home a Liggett cross.

As the clock hit half an hour, Liggett turned from provider to scorer, netting her second of the season with a calm finish into the bottom corner.

With Cheltenham constantly looking dangerous, Lue continued to be a problem for the Dons' defence. The young striker would win a second penalty before the break, but Draper pulled off a good save to deny Ffion Llewellyn.

Like the previous week, the Robinesses started the second half with a frantic pace and quickly added a fourth. Owen clipped a ball forward, allowing Lue to beat Draper to the ball and head home for her second of the afternoon.

The visitors would continue their momentum, forcing

Draper into a number of strong saves to deny Lue and Butcher.

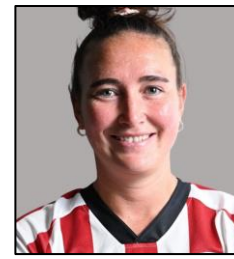
This didn't stop Cheltenham however, and Butcher would eventually get her goal. A Liggett effort from a corner was blocked twice from close range before Butcher pounced on the loose ball to force it over the line.

Cheltenham continued to dominate possession for the final 20 minutes of the game, with Mia Smith in Cheltenham's goal once again left with little to do.

The win sees Cheltenham move into second in the league, behind Exeter City Women on goal difference.



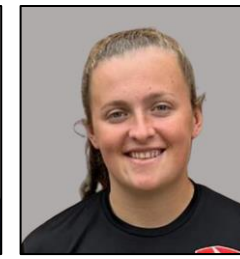
CHEL TENHAM TOWN WOMEN FC SQUAD 2024/25



EMILY OWEN



ELLA PEMBERTON



CONNIE PENGELLY



CARYS PUGH-JONES



MEG ATTENBOROUGH



LIBBY BELL

Sponsored By:
MORGAN & CARTER
POWELL



HENNA BUTCHER



MAISY COLLIS

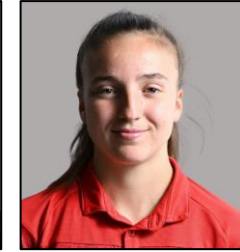


MANFY SHARPE

Sponsored By:
CHUNKY CHOWNS
CHILDCARE



MIA SMITH

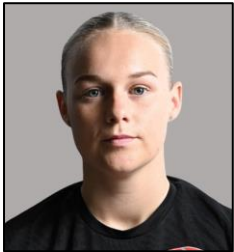


ANAIS TRINCI

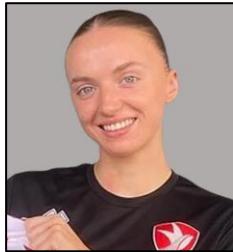


LILLY WELLESLEY-DAVIES

Sponsored By:
BLADES BIKES



HOLLY FINCH



DORIS GREENWOOD



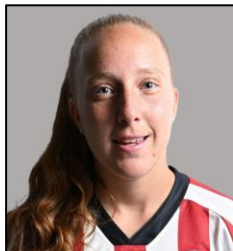
ESME HARRIS



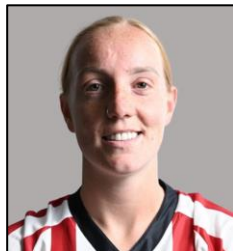
ABBAY HATELEY



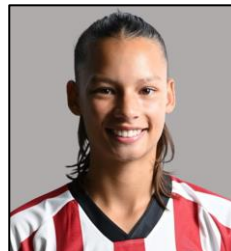
JESSICA LEACH



LACY-JAI LIGGETT



FFION LLEWELLYN



UNA LUE

Sponsored By:
270 CLIMBING

Contact
commercial@ctwomenfc.com
to sponsor your favourite
player today!



RESERVE TEAM

FA Women's National League Reserves Division South-West



DATE	OPPOSITION	COMP	SCORE	POM
Sept 1	A	Moneyfields	FAWNL RC1	
Sept 8	A	Swindon Town	FAWNL RD	
SEPT 29	H	KEYNSHAM TOWN	FA WNL RD	
OCT 6	H	PORTSMOUTH	FA WNL RD	
Oct 13	A	Moneyfields	FAWNL RD	
Nov 3	A	AFC Bournemouth	FAWNL RD	
NOV 10	H	EXETER CITY	FA WNL RD	
Nov 17	A	Cheltenham Civil Service	GFA WT2	
NOV 24	H	SWINDON TOWN	FA WNL RD	
Dec 1	A	Keynsham Town	FAWNL RD	
DEC 8	H	AFC BOURNEMOUTH	FA WNL RD	
Dec 15	A	Exeter City	FAWNL RD	
JAN 5	H	MONEYFIELDS	FA WNL RD	
Jan 12	A	Portsmouth	FAWNL RD	

FAWNL RD: FA WNL Reserves Division.

FAWNLRC: FA WNL Reserves Cup.

GFAWT: GFA Women's Trophy.

POM: Player of the Match (Chosen by opposition).

CHELTEMHAM TOWN WOMEN FC

**MAKE
FOOTBALL
EVERYONE'S
GAME.**



FAWNL

**RAINBOW
aces**





MARC PAYNE

PHOTOGRAPHY

I AM AN EXPERIENCED PHOTOGRAPHER BASED IN STROUD WITH OVER 5 YEARS EXPERIENCE CAPTURING A WIDE VARIETY OF PHOTOGRAPHY WITH A DIPLOMA IN PHOTOGRAPHY



PORTRAITS, WEDDINGS & SPORTS

07300562066

[HTTPS://LINKTR.EE/MARCPAYNEPHOTOGRAPHER](https://linktr.ee/marcpaynephotographer)



FIXTURES AND RESULTS

2024/25 Competitive Fixtures



DATE	OPPOSITION	COMP.	ATT.	POM
AUG				
SUN 18	H PLYMOUTH ARGYLE WOMEN	FAWNLSP	4-0	131 LIGGETT
Sun 25	A MK Dons Women	FAWNLSP	5-0	100 Attenborough
Thur 29	A Worcester City Women	WNLC DR	0-1	181 Owen
SEPT				
SUN 1	H AFC WIMBLEDON WOMEN	FAWNLSP	14:00	
Sun 8	A Billericay Town Women	FAWNLSP	14:00	
SUN 15	H HASHTAG UNITED WOMEN	FAWNLSP	14:00	
Sun 22	A Watford FC Women	FAWNLSP	14:00	
THUR 26	H GWALIA UNITED	FAWNLSP	19:45	
OCT				
Sun 6	A Oxford United Women	FAWNLSP	14:00	
SUN 13	H EXETER CITY WOMEN	FAWNLSP	14:00	
Sun 27	A Lewes FC Women	FAWNLSP	14:00	
NOV				
Sun 3	Adobe Women's FA Cup First Round			
SUN 10	H IPSWICH TOWN WOMEN	FAWNLSP	14:00	
Sun 17	A Plymouth Argyle Women	FAWNLSP	14:00	
DEC				
SUN 15	H MK DONS WOMEN	FAWNLSP	14:00	
JAN				
Sun 5	A AFC Wimbledon Women	FAWNLSP	14:00	
SUN 12	H BILLERICAY TOWN WOMEN	FAWNLSP	14:00	
Sun 19	A Bristol Rovers Women	GFA SWC	14:00	
FEB				
SUN 2	H OXFORD UNITED WOMEN	FAWNLSP	14:00	
Wed 12	A Gwalia United	FAWNLSP	19:45	
SUN 16	H PUCKLECHURCH WOMEN	GFA SWC	14:00	
SUN 23	H WATFORD FC WOMEN	FAWNLSP	14:00	
MAR				
Sun 9	A Hashtag United Women	FAWNLSP	14:00	
Sun 23	A Exeter City Women	FAWNLSP	14:00	
APR				
SUN 13	H LEWES FC WOMEN	FAWNLSP	14:00	
Sun 27	A Ipswich Town Women	FAWNLSP	14:00	

Fixture details subject to change.

POM: Player of the Match (as chosen by poll, match sponsor, or opposition where applicable).

FAWNLSP: FA Women's National League Southern Premier

WNLC / WNLP: FA Women's National League Cup/ Plate

AWFAC 1: Adobe Women's FA Cup

GFA SWC: Gloucestershire FA Senior Women's Cup



TODAY'S TEAMS

CHELTENHAM TOWN WFC

- 01 Mia Smith
- 02 Anais Trinci
- 03 Abbey Hateley
- 04 Holly Finch
- 05 Manfy Sharpe
- 06 Maisy Collis
- 07 Lacy-Jai Liggett
- 08 Megan Attenborough
- 09 Connie Pengelly
- 10 Libby Bell
- 11 Esme Harris
- 12 Henna Butcher
- 13 Ffion Llewellyn
- 14 Wellesley-Davies
- 15 **Emily Owen (c)**
- 16 Ella Pemberton
- 17 Doris Greenwood
- 19 Jessica Leach
- 21 Una Lue
- 30 Carys Pugh-Jones
Lexie North

AFC WIMBLEDON WOMEN

- 01 Rose Kite
- 02 Rosie Russell
- 04 Leeta Rutherford
- 05 Kelly Highman
- 06 Hannah Mackenzie
- 07 Emma Plewa
- 08 Fran Ali
- 09 **Ashlee Hincks (c)**
- 10 Ellie Dorey
- 11 Alex Hennessy
- 12 Kau'inohea Solomon-Taylor
- 13 Cherelle Khassal
- 14 Leanne Bell
- 15 Ella Newman
- 16 Emily Donovan
- 19 Kelly-Jade Whelan
- 20 Hannah Billingham
- 23 Jánaye Beaufort
- 26 Lauren Allen
- 29 Skye Bacon
- 35 Georgia Clifford



@CTWomenFC